

MID-APRIL 1996

# Professional Builder

Luxury  
Homes



## KITCHEN & BATH PORTFOLIO:

Brilliant Designs, From Timber Frame  
To Contemporary To Log Homes...20

An Illinois Builder's Own  
Luxury Lodge...14

Custom Builder Ken Madden Succeeds  
With The Barbecue Principle...58

8 New Products  
For A Knockout Bath...36

Don Skirrow builds Austin, Texas, Parade House, page 20

A CAHNERS PUBLICATION

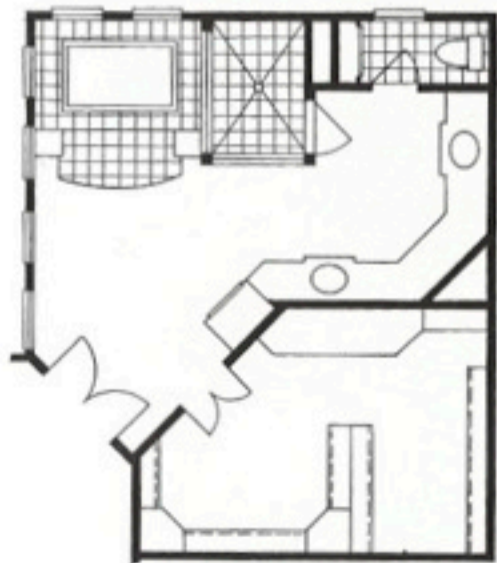




The master bath's hand-painted wall covering complements the French limestone flooring with granite inlays (above).

## Living In Broad Daylight

*Windows and skylights  
brighten the kitchen and bath.*

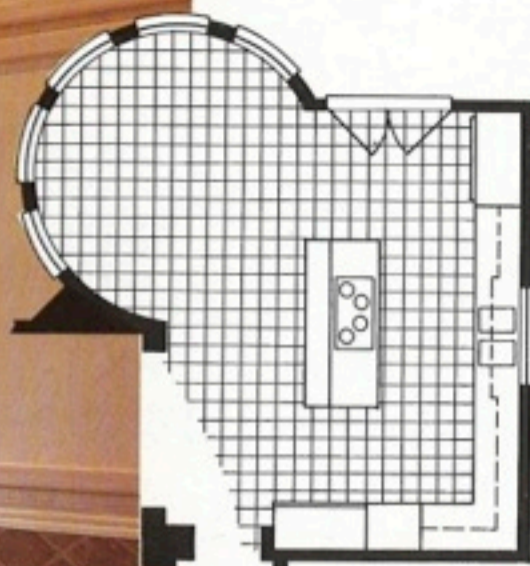


**C**hristopher Sims, Sims Custom Homes, Sugarland, Texas, built a 3924-square-foot house as a showhouse but sold it six weeks before the show started. Located in Arlington Court, a high-end subdivision 3 miles from downtown Houston, the house wraps around a rear pool. The kitchen and adjacent family room open to the pool terrace.

Sims's goal was to create an elegant, sophisticated custom house, and Robert Dame, Carmichael/Dame Builders, Stafford, Texas, aided him by providing the architectural design for the residence. Cynthia Stone Designs, Houston, was responsible for the interior design.

The kitchen's 12-foot ceiling and deep crown moldings establish its glamorous look, which is heightened by granite counters and Indian slate flooring. The room is bright and open to the exterior with ample glazing, which includes a large arched window





The elegance of this warm, bright kitchen is enhanced by the crown molding on top of the cabinets.

over the sink, a pair of glass doors leading to the terrace, and a dining bay partially surrounded by 8-foot-tall windows. A 6-foot-wide opening to the family room brings in additional daylight.

The preparation area is arranged in an L, with a long island opposite the sink and dishwasher. A sleek, glass-surfaced cooktop is installed in the island's surface. The adjacent leg of the L contains double ovens.

The tops of the custom ash cabinets are 10 feet from the floor. "We framed the doors with raised molding that leaves room for a hand grasp," says Sims. The tall pantry unit at the end of the cabinet run features interior shelves on pivot hinges that allow both sides of the front set of shelves to be used.

The focal point of the dramatic master bath is a large shower pavilion sheathed in black granite tile. Glass windows and a glass shower door prevent a heavy appearance. The 30-square-

foot enclosure provides ample room for two. The surround and steps of the adjacent whirlpool tub are granite slab. Polished brass faucets contribute to the room's elegance.

A toilet enclosure is located to the right of the shower. The custom birch vanity cabinets contain sinks installed in slab granite counters with a bullnose edge. Mirrors with a raised frame rise above the vanities to the deep crown molding.

The bath's open, spacious feeling is heightened by several windows on the exterior wall. Sims says that the windows at the 5-foot level afford the homeowners privacy, daylight and a good view. □

Major Products Used—Cooktop/Ovens: KitchenAid. Dishwasher: Bosch. Faucets: Andre. Hardware: Bouvet. Sinks: Elkay, Kohler. Tub: Kohler.